

**Anti-mGLUR6 Antibody**  
**Rabbit polyclonal antibody to mGLUR6**  
**Catalog # AP59571****Specification**

---

**Anti-mGLUR6 Antibody - Product Information**

Application	WB, IF/IC
Primary Accession	<a href="#">O15303</a>
Other Accession	<a href="#">Q5NCH9</a>
Reactivity	Human, Mouse, Rat
Host	Rabbit
Clonality	Polyclonal
Calculated MW	95468

**Anti-mGLUR6 Antibody - Additional Information****Gene ID** 2916**Other Names**

GPRC1F; MGLUR6; Metabotropic glutamate receptor 6; mGluR6

**Target/Specificity**

Recognizes endogenous levels of mGLUR6 protein.

**Dilution**

WB~~WB (1/500 - 1/1000), IF/IC (1/100 - 1/500)

IF/IC~~N/A

**Format**

Liquid in 0.42% Potassium phosphate, 0.87% Sodium chloride, pH 7.3, 30% glycerol, and 0.09% (W/V) sodium azide.

**Storage**

Store at -20 °C. Stable for 12 months from date of receipt

**Anti-mGLUR6 Antibody - Protein Information****Name** GRM6**Synonyms** GPRC1F, MGLUR6**Function**

G-protein coupled receptor for glutamate. Ligand binding causes a conformation change that triggers signaling via guanine nucleotide-binding proteins (G proteins) and modulates the activity of down-stream effectors, such as adenylate cyclase. Signaling inhibits adenylate cyclase activity (By similarity). Signaling stimulates TRPM1 channel activity and Ca(2+) uptake. Required for normal vision.

**Cellular Location**

Cell membrane; Multi-pass membrane protein. Endoplasmic reticulum membrane; Multi-pass membrane protein. Golgi apparatus membrane; Multi-pass membrane protein. Cell projection, dendrite Note=Subject to trafficking from the endoplasmic reticulum to the Golgi apparatus and then to the cell membrane

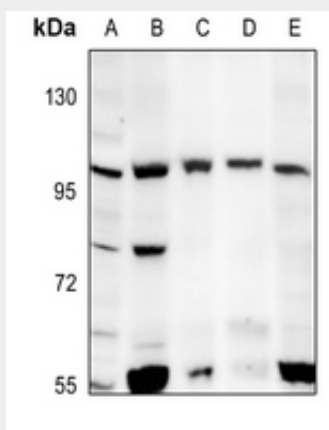
**Tissue Location**

Detected in melanocytes.

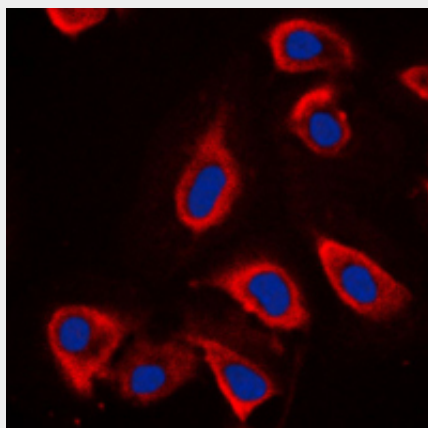
**Anti-mGLUR6 Antibody - Protocols**

Provided below are standard protocols that you may find useful for product applications.

- [Western Blot](#)
- [Blocking Peptides](#)
- [Dot Blot](#)
- [Immunohistochemistry](#)
- [Immunofluorescence](#)
- [Immunoprecipitation](#)
- [Flow Cytometry](#)
- [Cell Culture](#)

**Anti-mGLUR6 Antibody - Images**

Western blot analysis of mGLUR6 expression in C6 (A), SP20 (B), SHSY5Y (C), U87MG (D), A375 (E) whole cell lysates.



Immunofluorescent analysis of mGLUR6 staining in NIH3T3 cells. Formalin-fixed cells were permeabilized with 0.1% Triton X-100 in TBS for 5-10 minutes and blocked with 3% BSA-PBS for 30 minutes at room temperature. Cells were probed with the primary antibody in 3% BSA-PBS and incubated overnight at 4 °C in a humidified chamber. Cells were washed with PBST and incubated with a DyLight 594-conjugated secondary antibody (red) in PBS at room temperature in the dark. DAPI was used to stain the cell nuclei (blue).

**Anti-mGLUR6 Antibody - Background**

KLH-conjugated synthetic peptide encompassing a sequence within the C-term region of human mGLUR6. The exact sequence is proprietary.